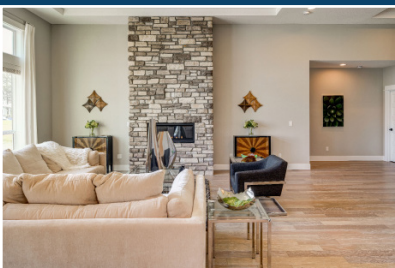




GARRETTE CUSTOM HOMES

SINGLE LEVEL
AND
MASTER-ON-MAIN HOMES





GARRETTE CUSTOM HOMES

CUSTOM HOME BUILDING MADE EASY!

We've put together a collection of our most popular single level and master on the main homes that are perfectly suited for your lifestyle. The home plans included in this catalog range from a cozy 1,482 SF home to a spacious 4,123 SF rambler with an upstairs bonus room offering up to 6 bedrooms. You're sure to find the perfect home to fit your needs.

At Garrette Custom Homes, we make custom home building easy. We offer over 30 home plans — including these 19 award winning single level and master on the main homes — along with many other premium options to make the building process easier and more cost-effective. When you choose Garrette as your home builder, you have our commitment to your budget, your choices, and your dream.

The Garrette Custom Homes team offers decades of experience in home building and land acquisition. Throughout the years, Garrette Custom Homes has built numerous homes in a variety of areas. That expertise ensures we can successfully estimate the actual cost, obtain permits in a timely manner, and present a finished home in as little as 5 months — nearly twice as fast as most home builders. Our steadfast commitment to your budget and timeline saves you money and virtually eliminates surprises.

When you're ready for the next step, plan on attending one of our New Home Building Seminars. Garrette Custom Homes will share the steps necessary to successfully build your dream home. In this informative presentation, our experienced staff will guide you through the entire process and answer your questions.

For more information on these home plans or to register for an upcoming Homebuilding Seminar, call us at (877) 506-1136 or email us at Info@BuildGCH.com

HOME PLAN	SIZE	PAGE
EL DORADO	4,123 SF	3
SHASTA XXL	3,756 SF	4
SHASTA XL	3,327 SF	5
RAINIER	3,213 SF	6
ASPEN	3,097 SF	7
CASCADE	3,003 SF	8
SHASTA	2,909 SF	9
SIERRA	2,893 SF	10
SIERRA MULTI-GEN	2,974 SF	11
ST. HELENS	2,596 SF	12
HENDERSON	2,546 SF	13
LANGLEY	2,387 SF	14
BARCLAY	2,342 SF	15
WHINTEY	2,205 SF	16
SENECA	2,098 SF	17
McKINLEY	1,982 SF	18
FORTE	1,910 SF	19
ARIA & MARSHALL	1,814 SF & 1,805 SF	21
TETON & SILVERTON	1,700 SF & 1482 SF	22
SHASTA DB	4,460 SF	23
RAINIER DB	4,130 SF	24
FORTE DB	2,738 SF	25
INCLUDED FEATURES		26
DESIGN STUDIO		27



THE EL DORADO

4,123 SF | 4-6 Beds | 3.5-4.5 Baths | 3-Car Garage

Spacious floor plan with versatile second floor bonus room!

The El Dorado plan includes upstairs bonus rooms that can be customized to best suite your family.



Elevation D



Elevation C



THE SHASTA XXL

3,756 SF | 4-5 Beds | 3.5-4.5 Baths | 3-Car Garage

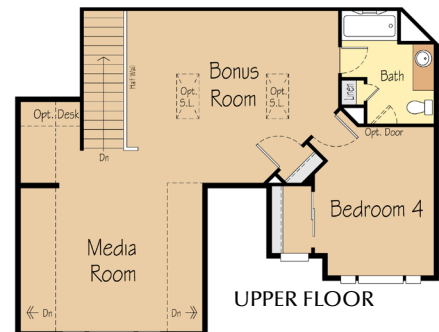
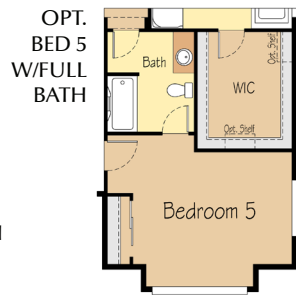
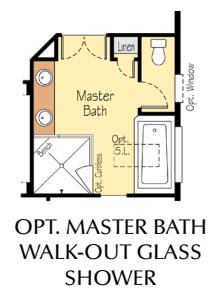
Expansive single level plan a roomy upstairs addition!

This Shasta plan includes an upstairs media and bonus rooms, another bedroom and a full bath. The Shasta XXL entry hall and great room with dramatic 12' ceilings adjacent to a spectacular gourmet kitchen with a spacious island and large pantry.

Elevation A



Elevation B



Elevation A

THE SHASTA XL

Elevation A

THE SHASTA XL

Elevation A

THE SHASTA XL

**Single level living
with versatile upstairs
bonus area!**

Single level living with versatile upstairs bonus area!

The Shasta XL floor plan includes an adaptable upstairs bonus area that can be used as a bonus room or a second master suite. The home also provides a formal dining room complete with a convenient butler's pantry to accommodate holiday gatherings.



Elevation A



THE RAINIER

3,213 SF | 4-5 Beds | 2.5-3.5 Baths | 3-Car Garage

Master on the main allows for single level living!

A dynamic staircase leads to a loft overlooking the window-filled great room, or create your ideal man cave or kids play area in the optional second floor bonus room.

Elevation B



Elevation C



MAIN FLOOR



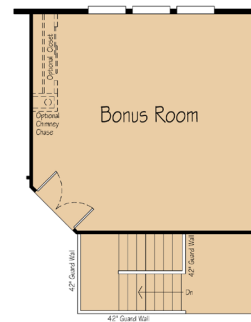
OPTIONAL MASTER SHOWER



OPTIONAL MASTER GLASS SHOWER

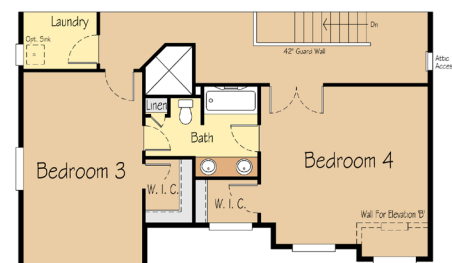


UPPER FLOOR



OPTIONAL MUD ROOM

OPTIONAL BONUS ROOM



JACK-N-JILL OPTION

Elevation A

THE ASPEN

Elevation B

Elevation A

THE ASPEN

Elevation B

Elevation A

THE ASPEN

Elevation B

Elevation A

THE ASPEN

Elevation B

Elevation A

THE ASPEN

Elevation B

Elevation B



The second floor plan shows a central hallway. To the left is the Laundry room, which includes a washer, a dryer, and a linen closet. To the right is the Powder room, which includes a toilet and a coat closet.

The second floor plan shows a bathroom with a bathtub, a toilet, and a sink. A staircase labeled 'Up' is located to the right of the bathroom. A dashed line indicates a doorway or partition.

Opt. Window

Opt. Skylight

Owners Bath

Linen

Opt. Curbside

OPT. WALK-OUT
SHOWER

Opt. Window

Opt. Skylight

Owners Bath

Opt. Linen

Opt. Closets

OPT. WALK-OUT
GLASS SHOWER

Bedroom 3

Loft

W/C

Opt. DBL. Door

Half Wall - Full Wall w / Opt.

Opt. Storage

Plant Shelf

Plant Shelf With Storage Option

Bonus Room

[illegible]

The second floor plan includes Bedroom 3 at the top, a central Loft area, and Bedroom 4 at the bottom. Bedroom 3 contains a bed, a closet, and an optional bathroom. The Loft features a staircase, a half wall, a plant shelf, and optional storage and closet space. Bedroom 4 has a bed and a closet. A small kitchenette with a sink and counter is located near the top right, and a bathroom is near the bottom right.

The second floor plan includes Bedroom 3 at the top, a central Loft area, and Bedroom 4 at the bottom. Bedroom 3 contains a bed, a closet, and an optional bathroom. The Loft features a staircase, a half wall, a plant shelf, and optional storage and closet space. Bedroom 4 has a bed and a closet. A small kitchenette with a sink and counter is located near the top right, and a bathroom is near the bottom right.

[illegible][illegible]

Elevation C



THE CASCADE

3,003 SF | 3-5 Beds | 2.5-4.5 Baths | 3-Car Garage

The master suite is a private oasis complete with a patio and a spacious walk-in closet!

The spacious master suite includes a private covered patio. Create your ideal man cave or kids play area in the optional second floor bonus room.

Elevation B



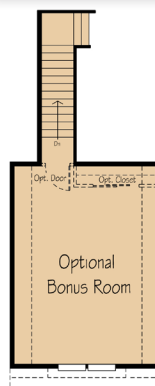
Elevation E



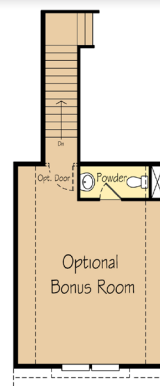
OPT. LARGE CUSTOM SHOWER



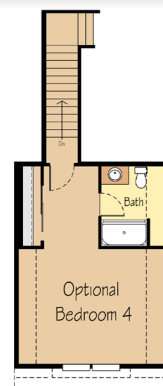
OPT. LARGE GLASS SHOWER



OPT. UPPER FLOOR



OPT. UPSTAIRS BONUS W/ POWDER



OPT. 2ND FLOOR 4TH BED

OPT. 4TH BED



DEN WITH POWDER ROOM OPTION



OPT. FULL BATH

Elevation A

THE SHASTA

Elevation D

Elevation A

THE SHASTA

Elevation D

Elevation A

THE SHASTA

Elevation D

Elevation A

THE SHASTA

Elevation D

Elevation A

THE SHASTA

Elevation D



Elevation A

THE SHASTA

Elevation D

Elevation A

THE SIERRA

Elevation B

Elevation A

THE SIERRA

Elevation B

Elevation A

THE SIERRA

Elevation B

Elevation A

THE SIERRA

Elevation B

Elevation A

THE SIERRA

Elevation B

Elevation B



Elevation A

THE SIERRA

Elevation B



Elevation A

THE SIERRA

Elevation B



Elevation A

THE SIERRA

Elevation B



Elevation A



THE SIERRA Multi-Gen

2,893 SF | 3-5 Beds | 2.5-3.5 Baths | 3-Car Garage

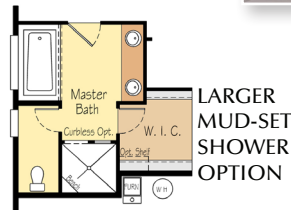
One-level living with secondary living space!

The Sierra Multi-Gen features a ground level secondary living space that includes a bedroom, sitting room, kitchenette, walk-in closet, bathroom, and private entrance.

Elevation B



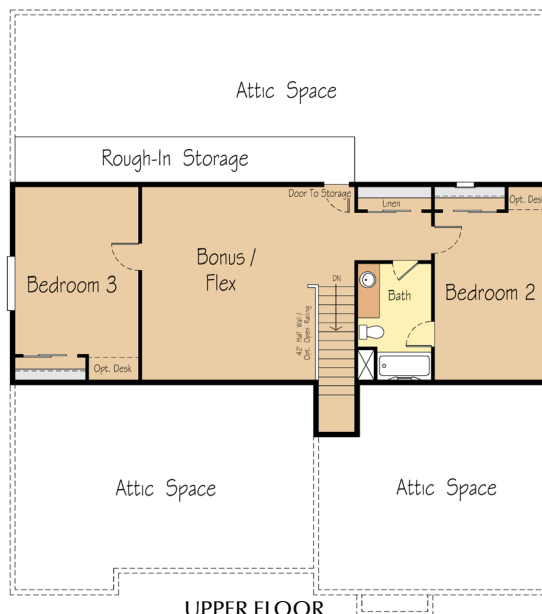
MAIN FLOOR



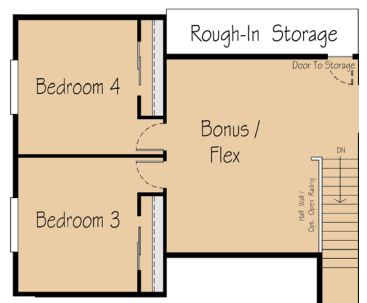
LARGER MUD-SET SHOWER OPTION



CURBLESS MUD-SET SHOWER OPTION



UPPER FLOOR



OPTIONAL 4TH BEDROOM UPSTAIRS

Elevation A



THE ST. HELENS

2,596 SF | 3-4 Beds | 2-3 Baths | 2-Car Garage

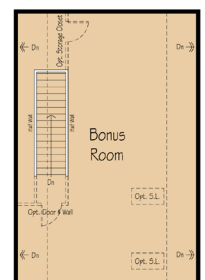
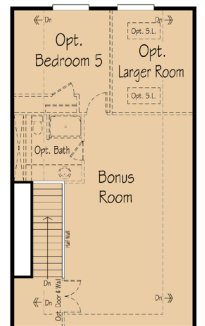
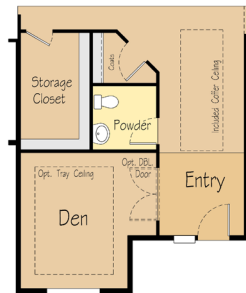
A single-level home that lives as large as a two-story!

The St. Helens features a villa-style kitchen that opens to the spacious great room. The master suite is set apart from the rest of the home, offering you a private and relaxing getaway.

Elevation B



Bonus Option Available!



Elevation B



THE HENDERSON

Elevation D



Elevation B



THE HENDERSON

Elevation D



Elevation B



THE HENDERSON

Elevation D



The Henderson features an open, spacious floor plan. The gourmet kitchen is joined to the dining room which open to the great room. The entryway den makes a perfect home office, and the master suite includes a soaking tub and oversized walk-in closet.



Elevation B



THE LANGLEY

2,387 SF | 3-4 Beds | 2.5-4.5 Baths | 3-Car Garage

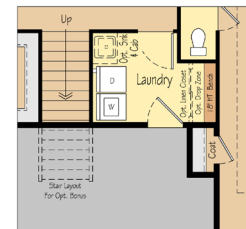
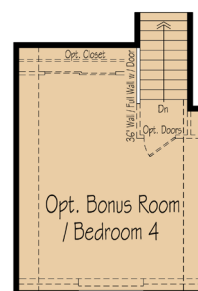
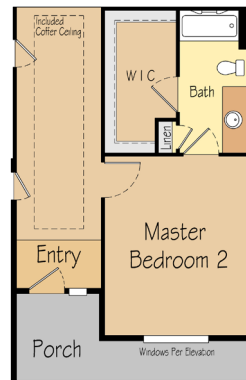
An open single-level home with optional upstairs 4th bed or bonus!

Effortlessly entertain with the open gourmet kitchen and great room in this flexible floor plan with options for everyone. The master suite is a private oasis set aside from the other bedrooms, with many options and a spacious walk-in closet.

Elevation C



Elevation D



Elevation A

THE BARCLAY

Elevation B

Elevation A

THE BARCLAY

Elevation B

Elevation A

THE BARCLAY

Elevation B

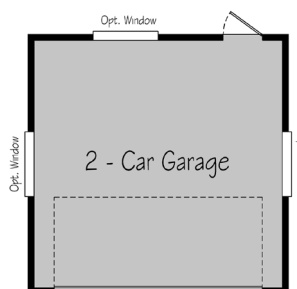
Effortlessly entertain with an open gourmet kitchen and high ceiling great room. The den off the entryway makes a great home office, hobby room, or guest room. The master suite is a private oasis with many options and a spacious walk-in closet.



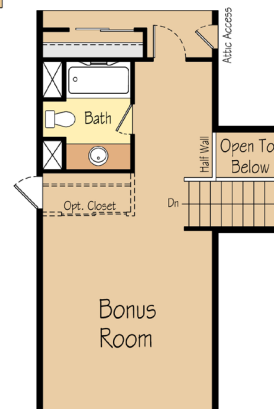
Elevation C

[illegible]

The second floor plan features a large central bedroom (Bedroom 4) with a window for elevation. To the left of the bedroom is an entry area. Above the entry is a bathroom containing a toilet and a sink. To the right of the bathroom is a walk-in closet (WIC). Above the bathroom is a storage area with a door leading up. A porch is located at the bottom of the plan, accessible from the entry. A window for elevation is also shown on the right side of the bedroom.



The floor plan shows a central hallway with a staircase labeled 'Open To Below' and 'Down'. To the left of the hallway are Bedroom 2 and Bedroom 3. Between the bedrooms is a Bath and a Storage area. An inset shows the Laundry room with a washer/dryer (W/D) and a sink. Labels include 'Attic Access', 'Half Wall', and 'Opt. Window'.



Elevation A

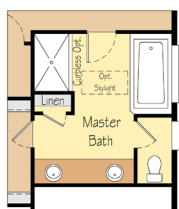


THE WHITNEY

2,205 SF | 3 Beds | 2-3 Baths | 2-Car Garage

An open single-level home with a handy shop area in the garage!

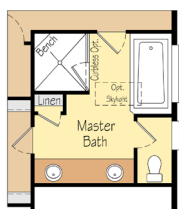
Effortlessly entertain with an open gourmet kitchen and spacious great room. The parlor off the entryway makes a great home office, hobby room, or guest room. The master suite is a private oasis with many options and a spacious walk-in closet.



SOAKING TUB
OPTION A



MUD-SET SHOWER
OPTION B



LARGER MUD-SET
SHOWER OPTION C



MAIN FLOOR

Elevation B



Elevation C



MAIN LEVEL OPTION
PLAN A



MAIN LEVEL OPTION
PLAN B

Elevation A



THE SENECA

2,098 SF | 3 Beds | 2-2.5 Baths | 3-Car Garage

Spacious single level living with an included 3-car garage!

The Seneca features spacious single level living and 12' ceiling in the great room perfect for entertaining or enjoying Pacific Northwest views.

Elevation B



Elevation C



Elevation D



Elevation A



THE MCKINLEY

1,982 SF | 3-4 Beds | 2 Baths | 2-Car Garage

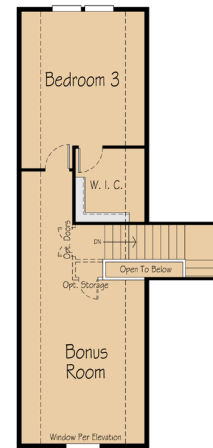
An open single-level home with a handy shop area in the garage!

Effortlessly entertain with an open gourmet kitchen and high ceiling great room. The parlor off the entryway makes a great home office, hobby room, or guest room. The master suite is a private oasis with many options and a spacious walk-in closet.

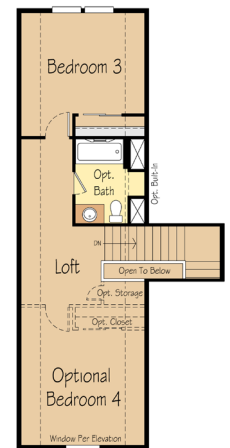
Elevation B



MAIN FLOOR

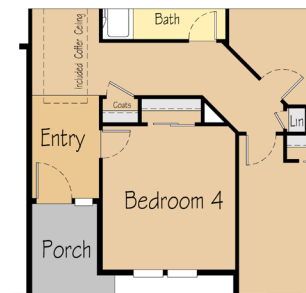


OPTIONAL BONUS WITH BEDROOM



OPTIONAL BONUS EN SUITE

Bonus Room Option Available!



OPTIONAL FOURTH BEDROOM

Elevation A



THE FORTE

Elevation B



1,910 SF | 2-3 Beds | 2-2.5 Baths | 2-Car Garage

The welcoming front porch opens to a grand entry and airy home plan. The gourmet kitchen overlooks a spacious great room and covered outdoor patio, and the secluded master suite includes a large walk-in closet.

Elevation B

A 3D architectural rendering of a two-story house, identified as Elevation B. The house features a steep gabled roof with dark grey shingles and a light-colored wooden bargeboard along the eaves. The main body of the house is clad in dark grey horizontal siding. The foundation is finished with a light-colored, stacked stone veneer. On the left side, there is a large two-car garage with a dark grey, paneled door. In the center, a small covered entryway leads to a wooden front door. To the right of the entrance is a large window with white trim and light-colored shutters. The house is set against a backdrop of green trees and a sunset sky with orange and pink hues. A concrete driveway leads to the garage, and a small landscaped area with shrubs and flowers is in the foreground.

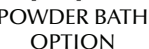
Elevation C



A 3D architectural rendering of a two-story house with a gabled roof. The exterior features dark grey horizontal siding and a dark brown roof. A prominent stone veneer accent is located on the right side of the front facade, surrounding the main entrance and extending up the side of the house. The front entrance has a wooden door and a small arched window above it. To the left of the entrance is a two-car garage with grey paneled doors. The house has several windows, including a large multi-paned window on the upper left and a smaller window on the upper right. The landscaping includes a paved driveway, a concrete walkway, and various shrubs and small trees. The background shows a clear blue sky and more trees.

Elevation D

A 3D architectural rendering of a single-story house with a gabled roof, dark grey siding, and white trim. The house features a large two-car garage on the left, a central entrance with a small porch, and a window on the right. The background shows a sunset sky and trees.



Looking for smaller home or
have a unique homesite that
requires a unique home plan?

VIEW OUR SMALL SINGLE-LEVEL AND DAYLIGHT BASEMENT HOME PLANS!

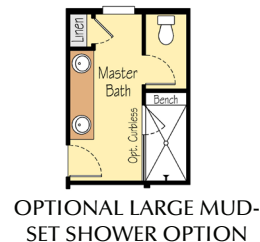
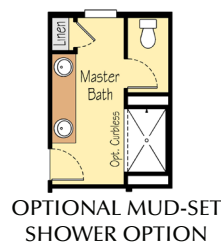
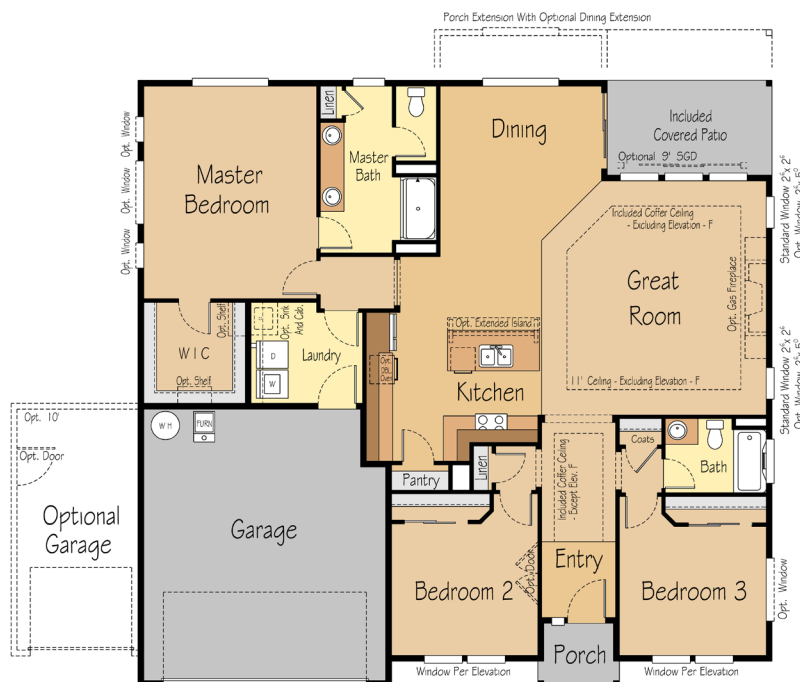




1,814 SF | 3 Beds | 2 Baths | 2-Car Garage



1,805 SF | 3 Beds | 2 Baths | 2-Car Garage





1,700 SF | 3 Beds | 2 Baths | 2-Car Garage



1,805 SF | 3 Beds | 2 Baths | 2-Car Garage



Elevation D



THE SHASTA Daylight Basement

4,460 SF | 3-7 Beds | 2.5-4 Baths | 3-Car Garage

Elevation A

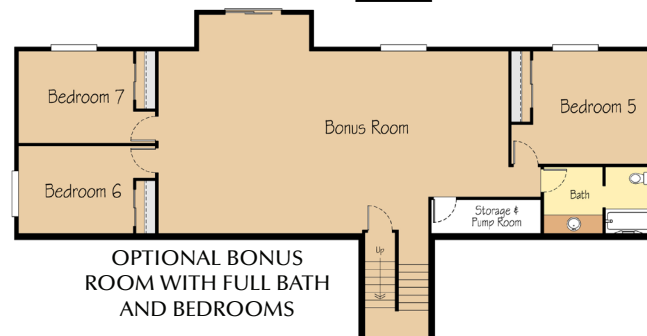
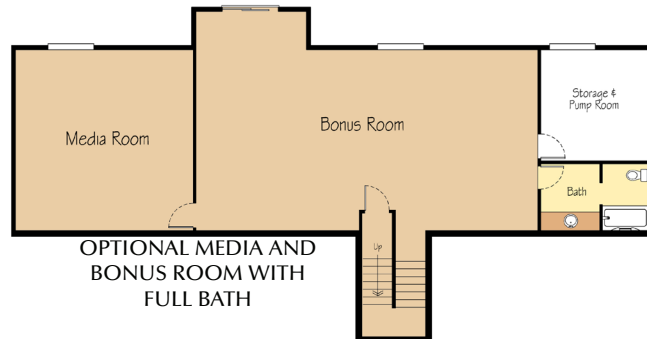
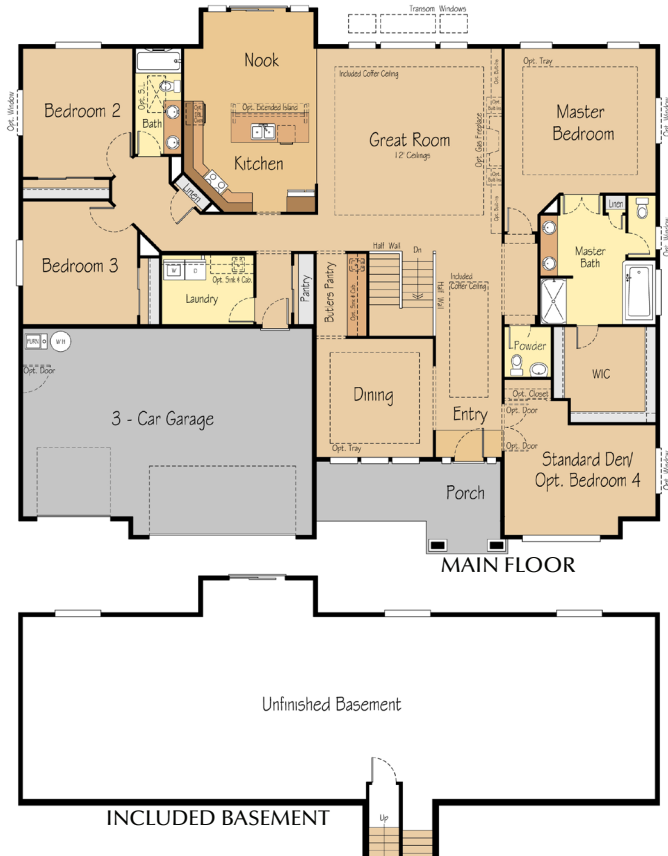


Elevation F



Spacious home plan with daylight basement and 12' ceilings in the great room!

The spacious great room offers 12' ceilings in the Shasta and the flexible basement allows you to pick the features that work for you.



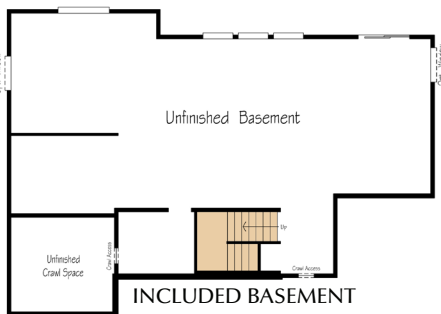
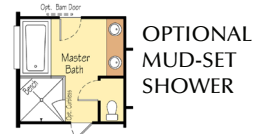
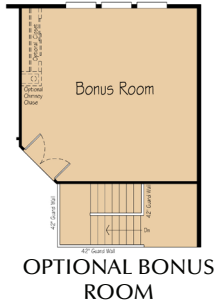


THE RAINIER Daylight Basement

4,130 SF | 4-6 Beds | 2.5-4.5 Baths | 3-Car Garage

Spacious home plan with daylight basement and a two-story great room!

The spacious great room offers 12' ceilings in the Shasta and the flexible basement allows you to pick the features that work for you.



Elevation D



THE FORTE Daylight Basement

2,738 SF | 3-4 Beds | 3-3.5 Baths | 2-Car Garage

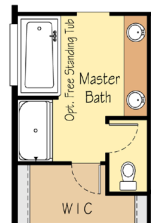
Spacious home plan with daylight basement and a included covered patio!

The spacious great room opens to the gourmet kitchen perfect for entertaining. The daylight basement offers the perfect secondary living space.

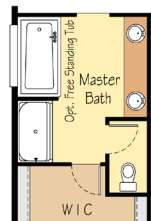
Elevation B



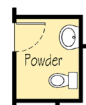
Elevation F



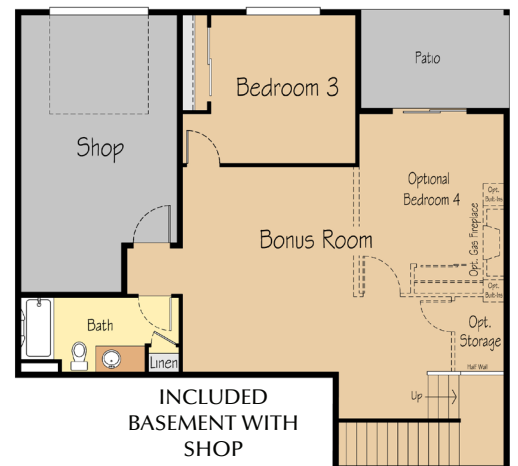
SOAKING TUB OPTION



SOAKING TUB OPTION



POWDER ROOM OPTION



INCLUDED FEATURES

HOME EXTERIOR

HOME SIDING

Specifically suited to our damp Northwest climate, HadriPlank, a James Hardie® brand siding, is designed to look its best for decades while resisting fire and water damage.

PORCHES AND PATIOS

Concrete or cedar front porches and back patios (per plan) provide a stylish space to greet neighbors and relax with family and friends.

DRIVEWAY

An essential part of your front landscaping, with up to 20' of long-lasting, low-maintenance exposed aggregate.

LANDSCAPING

Grass, irrigation, and shrubs

*speak to one of our sales consultants for details (location and quantity)

KITCHEN

36" RECESSED OR SHAKER-STYLE CABINETS

Custom built for each new home, the stained Alder cabinets offer increased height and depth.

GRANITE SLAB COUNTERTOPS

As practical as it is beautiful, granite slab countertops offer long lasting durability and is scratch resistant.

STAINLESS STEEL APPLIANCES

- Energy efficient 36" 5 burner Frigidaire® gas cooktop with a microhood for a sensational up-scale appearance .
- The hard working Frigidaire® dishwasher helps save on energy bills.
- Frigidaire® double ovens for cooking large meals.
- Built-in Frigidaire® microwave that you will barely know is there.

IMPROVED KITCHEN SINK AND FAUCET

The Silvercast® stainless kitchen sink is hygienic and easy to clean, providing a barrier from rust and contaminants. The Delta® faucet features a handy, water-saving pull out sprayer with two settings.

BATHROOMS

TALL MASTER VANITY WITH TILE COUNTERTOPS

Timeless style and practical benefits with the tall master vanity and 12" tile counters with bull-nose edges.

FLOORS

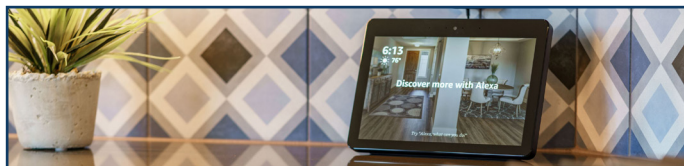
Tile floors in all bathrooms. Select from various options to compliment your style

TOILETS

Gerber Maxwell® Elongated toilet provides superior comfort while the Easy Close Bemis® set opens and closes smoothly and quietly.

TILED MASTER BATH

A double-wide five-foot shower with luxuriously tiled walls and fiberglass pan and sliding glassdoor.



FLOORING

HARDWOOD OR LAMINATE

The warm look of hand scraped or smooth plank hardwood or laminate flooring is included in the entry, dining nook, and kitchen. (per plan)

CARPET

Soft and durable Frieze carpeting is long lasting and hides footprints.

PRODUCTS & CONSTRUCTION

WATER HEATER

In Washington, the high-efficiency 65-gallon hybrid electric heat pump hot water heater that provides a maximum efficiency and savings on energy bills. In Oregon, the natural gas 40-gallon quick recovery water heater or electric water heater, depending on plan, provide the same energy efficiency and savings.

FAUCETS

High quality Delta® faucets are used throughout the home.

CEILINGS

The 9' first-floor ceilings give the home an open and airy feel, while making the rooms appear larger.

TRUE CRAFTSMAN MILLWORK

Beautifully painted millwork with five-panel doors featuring fully wrapped windows throughout the home.

SMART HOME TECH

Control and monitor your home wirelessly with your smart device. Amazon Dot and Amazon Spot included. Enjoy peace of mind and security with Fluent.

GARAGE DOOR OPENER

A garage door opener with two remotes is included in each new home.

EXTRAS

- Quiet BCI floor joists
- Sturdy 2"x6" construction, and Tyvek® house wrap weather barrier.
- Squared drywall corners

DETAILS

OLD WORLD BRONZE FIXTURES

Popular Old World Bronze finish is standard for the front door, bathrooms, and lighting fixtures. For a more contemporary look, fixtures are also available in a chrome and nickel finish.

GAS FIREPLACE

The cozy fireplace comes complete with granite or ceramic tile surround and painted mantle

USB WALL CHARGERS

One innovative AC wall outlet with two USB ports make charging smart phones and tablets easy and convenient.

CHAIR RAIL

The decorative chair rail, with accent color beneath, adds warmth and beauty to your home.

ROCKER SWITCHES AND LEVER DOOR HANDLES

Easy-to-use rocker switches and convenient lever door handles with bronze and nickel finish are used throughout the home.

Personalize your home in our 5,000 Sqft **DESIGN STUDIO**



Choose from hundreds of personal features in our design studio with help from our expert designers. You will also have the opportunity to attend our Design Studio Preview Event to have a sneak peak into your design studio experience. You can sign up for our Design Studio Preview Event on our website.

 **Garrette Custom Homes**.com



For more information on any of these home plans or to register for an upcoming Homebuilding Seminar please contact us at (877) 506-1136 | Info@BuildGCH.com



 [Garrette Custom Homes.com](https://www.GarretteCustomHomes.com)



Follow us



OR CCB# 173524; WA LIC # GARRECH915MA; WA LIC # GARRECH875LC In an effort to continuously improve our product, Garrette Custom Homes reserves the right to modify pricing, plans, policies, exteriors and specifications at any time. These are computer renderings and actual construction may vary. Square footage is approximate. Floor plans and finishes may vary from one neighborhood to another. R11/20